

## EMC Smarts IP Availability Manager Extension for IPv6

Enhancing the discovery, monitoring, and analysis of the latest generation of IP network technology

### The Big Picture

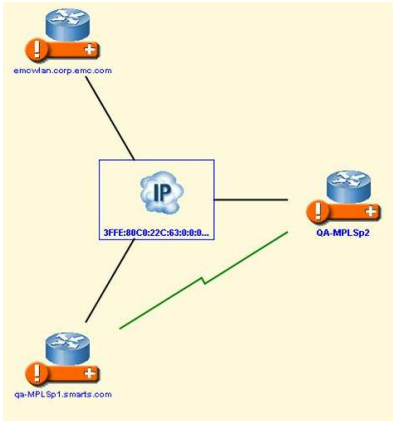
- Extends realtime root-cause and impact analysis of IP network problems to IPv6 connectivity
- Supports dual-stack v4-v6 solutions during migration, and then provides a powerful platform for single-stack IPv6 in the future
- Automates critical management tasks, including discovery, modeling, root-cause and impact analysis, event correlation, and graphic visualization
- Minimizes dependency on skilled resources and reduces operations costs by adapting automatically to changing network environments
- Maximizes IP network availability by helping you find and fix problems that matter—before they impact operations
- Scales easily to manage the largest and most complex networks

Explosive growth and global use of the Internet has driven the need for a new Internet protocol that can support an ever-expanding number of users, applications, and services. Internet Protocol version 6 (IPv6) provides much-needed expanded address space while ensuring worldwide access to a high-quality and secure next-generation Internet.

The networking industry is in the early stages of IPv6 deployment. Since the use of IPv4 remains prevalent, IPv4 and IPv6 hosts will need to coexist for a substantial time as users and vendors navigate the migration process.

Recognizing the importance of IPv6 and the challenges for managing increasingly complex global IP networks, the EMC Smarts IP Availability Manager Extension for IPv6 extends our proven IP network management solutions to support the IPv6 protocol. Patented EMC® Smarts® technologies automate and integrate discovery, modeling, and root-cause and impact analysis of IPv4 and IPv6 dual stack networks, and provide a platform for migration to single-stack IPv6 in the future. With IP Availability Manager Extension for IPv6, enterprise, service provider, and government organizations can maximize network availability and performance, protect mission-critical network-dependent services, and reduce operating cost and risk dramatically.

The IP Availability Manager Extension for IPv6 represents the first step in a phased approach that will ultimately extend IPv6 support to key EMC Smarts network management solutions: EMC Smarts Network Protocol Manager, EMC Smarts Multicast Manager, and EMC Smarts MPLS Manager.



The EMC Smarts IP Availability Manager Extension for IPv6 discovers, models, and builds a topology map of the components of the IPv6 and related environments—and their relationships—quickly, accurately, and automatically.

## Take the Next Step

To learn more about how IP Availability Manager Extension for IPv6 and other EMC Smarts solutions can positively impact your business and IT operations, contact your local EMC or EMC Smarts sales representative, or visit our website at [www.smarts.com](http://www.smarts.com).



**EMC Corporation**  
 44 South Broadway  
 White Plains, NY 10601  
 1-914-948-6200  
 In North America 1-866-462-4274  
 In Europe +44 (0) 20 8758 6750

EMC<sup>2</sup>, EMC, Smarts, and where information lives are registered trademarks of EMC Corporation. All other trademarks used herein are the property of their respective owners.

© Copyright 2006 EMC Corporation.  
 All rights reserved. Published in the USA. 05/06

Data Sheet  
 S0068

## Extending the power of IP Availability Manager

Building on powerful Smarts technology, the IP Availability Manager Extension for IPv6 provides the same industry-leading features, functionality, and value that are managing complex distributed networks:

- Discovers and models the components of the IP and related environments—and their relationships—quickly and accurately
- Monitors the IPv6 network for problems that can impact business-critical services
- Correlates events, topology, and analysis from EMC Smarts and third-party management tools across the IPv4-IPv6 stacks and related network domains
- Pinpoints root-cause problems automatically and accurately in real time, distinguishing service-affecting problems from their symptoms
- Understands how problems spread across domains to the service level, and calculates their impacts on business operations (when used with EMC Smarts Business Impact Manager)

A core component of the EMC Smarts suite, IP Availability Manager with the IPv6 Extension integrates seamlessly with other EMC Smarts solutions to provide end-to-end management of your complex distributed infrastructure.

## Business features

- Robust and flexible auto-discovery provides thorough control of the discovery process
- Accurate repository represents a cohesive, complete model of the IP network, including IPv6 connectivity
- Root-cause and impact analysis supports the latest technologies and network architectures

## Technical specifications

**System requirements:** EMC Smarts 6.5

**Operating systems supported:** Solaris 8 and 9; and Windows 2003 Server

## About EMC Smarts

EMC Smarts plays a crucial role in building an information lifecycle management strategy by automating the management of networks, applications, and storage systems. With EMC Smarts software solutions, enterprise, service provider, and government organizations gain unprecedented insight into how the end-to-end health of their networks, applications, and storage systems affects the business, including:

- Increased IT performance and availability
- Alignment of IT with the business
- Instant identification of what to fix through automated root-cause and impact analysis
- Automatic adaptation to changing environments
- Dramatically reduced management costs
- Management of IT across multiple tools, domains, and silos