

# Simplifying Microsoft Exchange Item-Level Restore with EMC NetWorker

## The Big Picture

- Item-level recovery from a database backup through EMC NetWorker
- Easily recover mailboxes, messages, contacts, calendar items, and tasks
- Enables user self-service to lower administrative overhead
- Single application and interface for item-level recovery

## Exchange protection

Microsoft® Exchange® has grown into a broadly deployed critical business application. The amount of data being created within Exchange environments translates into significant server growth, compounding the task of backup and recovery. And as Exchange Storage Groups, database files, logs, and other Exchange components grow, so does the need for a reliable data protection solution.

Restores are needed not only at the system level for disaster recovery, but also at the granular mailbox level for operational recovery. Today, many customers are accomplishing granular recovery using an overly complicated process that requires multiple product interfaces and steps. EMC® NetWorker® simplifies granular item-level recovery by interfacing directly with Microsoft Exchange and delivering restores of single mail items with a minimum number of steps—all through a NetWorker interface.

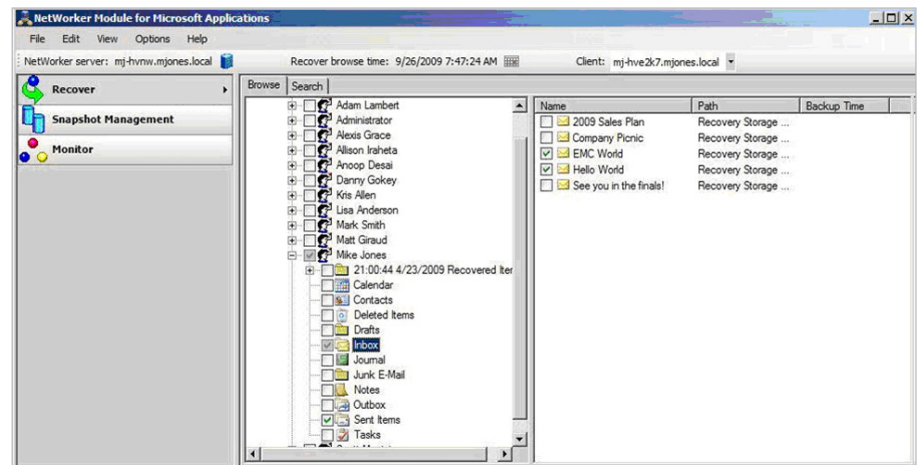
As a result, customers can now deploy a simple solution for granular recovery from an Exchange backup performed with NetWorker using either the NetWorker Module for Exchange or NetWorker Module for Microsoft Applications.

## NetWorker Module for Microsoft Applications

NetWorker delivers complete backup and recovery for Exchange. The NetWorker Module for Microsoft Applications (NMM) offers broad Exchange support and delivers fast, online protection in conjunction with VSS. NetWorker leverages the Exchange VSS Writer to target Exchange Storage Group databases and logs. It backs up at the Exchange Storage Group level and supports full backups.

With NMM, NetWorker can eliminate the daily backup window for Exchange backup jobs. Persistent snapshots of Exchange data created in conjunction with VSS hardware providers can be tracked and used for quick recovery. Snapshots can also be used to deliver off-host backup by leveraging a Proxy Node to mount and back up Exchange data to tape, disk, or virtual tape. Through Exchange Cluster Continuous Replication (CCR), NetWorker backs up data from CCR Passive Nodes—further ensuring production Exchange systems are not impacted for the purpose of backup.

NetWorker provides disaster recovery via a number of capabilities. Through VSS, users can execute point-in-time or roll-forward recoveries. Recovery can be done from the Exchange Storage Groups or Exchange Mailbox Databases. And when a VSS hardware solution is leveraged, it is easy to do quick snapshot recoveries or rollbacks through integration with VSS hardware providers.



## Granular recovery with NetWorker Module for Microsoft Applications

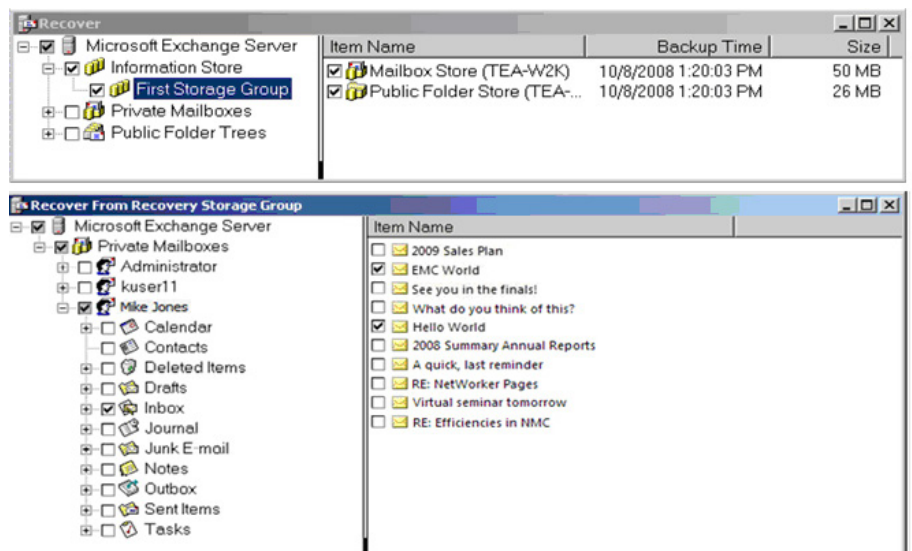
From an operational recovery perspective, it is important to provide granular mailbox recovery capabilities. NetWorker delivers this by supporting recovery to the Exchange Recovery Storage Group, or RSG. This ensures that you can easily browse and recover mail data from the NetWorker user interface. By leveraging the RSG for mailbox recoveries with NetWorker, there is no restriction on the type of backup schedule you can use—both fulls/incrementals are supported—and there is no limitation on the type of backup media supported—disk, tape, virtual tape, and target/source deduplication are all supported.

## NetWorker Module for Exchange

Another option for Exchange protection is the NetWorker Module for Exchange. It provides online Exchange protection via Extensible Storage Engine (ESE) and Messaging API (MAPI) interfaces. Similar to the NetWorker Module for Microsoft Applications, it can leverage multiple backup topologies including traditional LAN-based and LAN-free over SAN.

## Granular recovery with NetWorker Module for Exchange

As with the NetWorker Module for Microsoft Applications, the NetWorker Module for Exchange supports use of the Recovery Storage Group to quickly restore lost mailbox items. Once data is restored to the RSG using NetWorker, you can browse and recover individual mailboxes and items quickly and easily from the NetWorker interface.



## Summary

NetWorker simplifies backup and recovery for Microsoft Exchange whether you are using the NetWorker Module for Microsoft Applications or the NetWorker Module for Exchange, and both modules provide fast and reliable granular recovery capabilities from a database backup. NetWorker easily recovers mailboxes, messages, contacts, calendar items, and tasks. NetWorker reduces the complexity of single mailbox or mail item recovery by using a common NetWorker user interface or single pane of glass and enabling user self service for recoveries.



EMC Corporation  
Hopkinton  
Massachusetts  
01748-9103  
1-508-435-1000  
In North America 1-866-464-7381  
www.EMC.com