

# EMC Symmetrix TimeFinder Family of Software

## Improve productivity and application availability with Symmetrix local replication software

### The Big Picture

- Minimize data exposure and recovery times
- Improve data recovery and application consistency
- Increase application availability, reduce scheduled downtime
- Enable non-disruptive access to critical data for concurrent processing activities
- Maximize performance in high-demand replication environments

### Storage software that enables you to work smarter, not harder

The EMC® Symmetrix® TimeFinder® family of local replication software is the most field-proven, widely deployed, array-based, point-in-time solution in the world with tens of thousands of licenses shipped in the most-demanding customer environments. Leveraging the industry-leading high-end Symmetrix system, TimeFinder offers the most choice and flexibility to meet any service-level requirement.

The TimeFinder family of software provides a local copy of data, independent of the host and operating system, application, and database. TimeFinder local replication software helps companies manage backup windows while minimizing or eliminating any impact on the application and host performance. It allows for immediate application and host access when data restoration from the copy is necessary, enabling faster business resumption and maximizing revenue-generation and customer-support opportunities. This also significantly improves productivity by providing fast data refreshes for activities such as data warehousing and decision support, all while allowing you to control or reduce costs for increased competitive advantage.

The TimeFinder family of software includes:

- **TimeFinder/Clone** creates high-performance, full-volume copies of production data within a Symmetrix system. TimeFinder/Clone allows up to 16 active clones of a single production device, all of which are immediately available for both read and write access and can use RAID 5 and/or RAID 6 protection schemes.
- **TimeFinder/Snap** creates high-function, space-saving copies of production data within a Symmetrix system. TimeFinder/Snap allows up to 128 active snapshot copies of a single production device, which are immediately available for both read and write access and can use RAID 5 and/or RAID 6 protection schemes.

The TimeFinder family of software also consists of other options, offering the most comprehensive portfolio of local point-in-time copy solutions in the industry to meet a wide range of business needs for productivity-enhancing and data-restore operations.

The other TimeFinder options include:

- **TimeFinder/Consistency Groups (TF/CG) option**, provided at no additional cost, ensures dependent-write consistency of the application data when creating a point-in-time image across multiple devices associated with an application within a single Symmetrix system, or applications that also span multiple Symmetrix systems.
- **TimeFinder/Exchange Integration Module (TF/EIM) option** provides a comprehensive backup and recovery management interface for Windows servers that support Microsoft Exchange databases residing in a Symmetrix system. TF/EIM automates the process of creating TimeFinder copies for backup and restores operations in Exchange Server 2003 and Exchange Server 2007 environments.
- **TimeFinder/SQL Integration Module (TF/SIM) option** provides a comprehensive backup and recovery management interface for Windows servers that support Microsoft SQL databases residing in a Symmetrix system. TF/SIM automates the process of creating TimeFinder copies for backup and restores operations in SQL Server 2005 and SQL Server 2008 environments.
- **TimeFinder/Clone Emulation** enables customers to easily leverage their existing TimeFinder/Mirror scripts with new Symmetrix systems being deployed. This capability is available at no additional cost and provides investment protection for EMC customers.



TimeFinder/Clone delivers high-performance, full-volume copies and improves productivity by making them available for backup, reporting, testing, operating system and patch update testing, and data warehouse and decision-support operations.

The key benefits of the TimeFinder family of software include:

- Improves productivity by making copies of application data available for backup, data warehouse, and other purposes by offloading the production environment
- Increases application availability by reducing downtime during a restore by providing immediate application restart with access to data
- Independent of hosts and operating systems, applications, and databases
- Supports UNIX, Linux, mainframe, and Windows operating system environments
- Integrated with major applications, including Oracle, SAP, VMware®, Microsoft, and IBM

## A backup strategy that works smarter, not harder

The TimeFinder family makes the often tedious backup function more streamlined and efficient. Backup operations can be conducted on TimeFinder copies at any point in time and as frequently as desired. Limitations and risks imposed through partial backups are drastically reduced. Normal procedures can be used to back up the data copy contents onto tape while your applications continue providing full service.

Mainframe and open systems independent software vendors (ISVs) have integrated TimeFinder with their various application management tools to non-disruptively obtain point-in-time copies of application data. This enables activities such as database backup, recovery, and reorganization to be performed automatically and efficiently using fewer host resources. Integration with open systems management tools provides TimeFinder family users with the ability to manage volumes from a single platform.

## Load or update data warehouses with ease

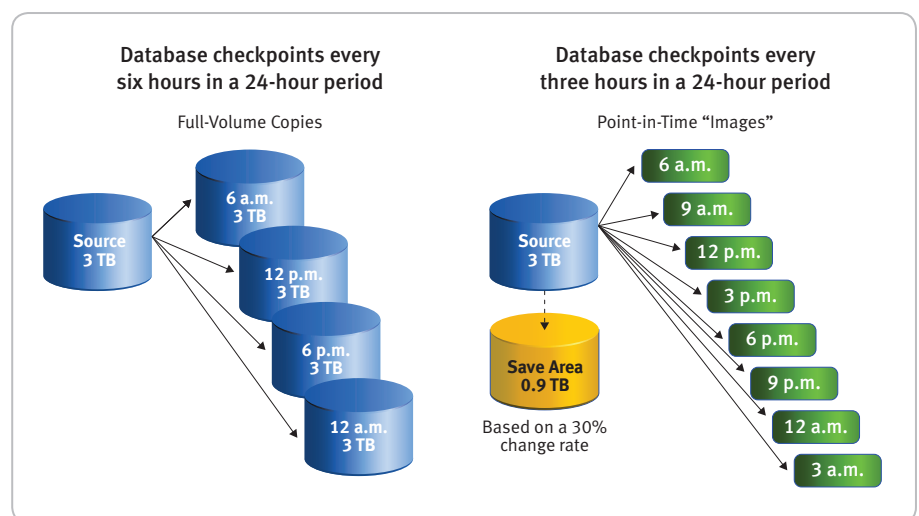
By using TimeFinder data copies as the data warehouse load source, business continues as usual even as the warehouse is populated with information or refreshed. Since updates are not disruptive, they can be made more frequently, providing a more accurate basis for data analysis and smarter, timelier business decisions. “What if” scenarios can be run on more up-to-date information, which can result in more accurate business predictions.

## Rapid, reliable application restart

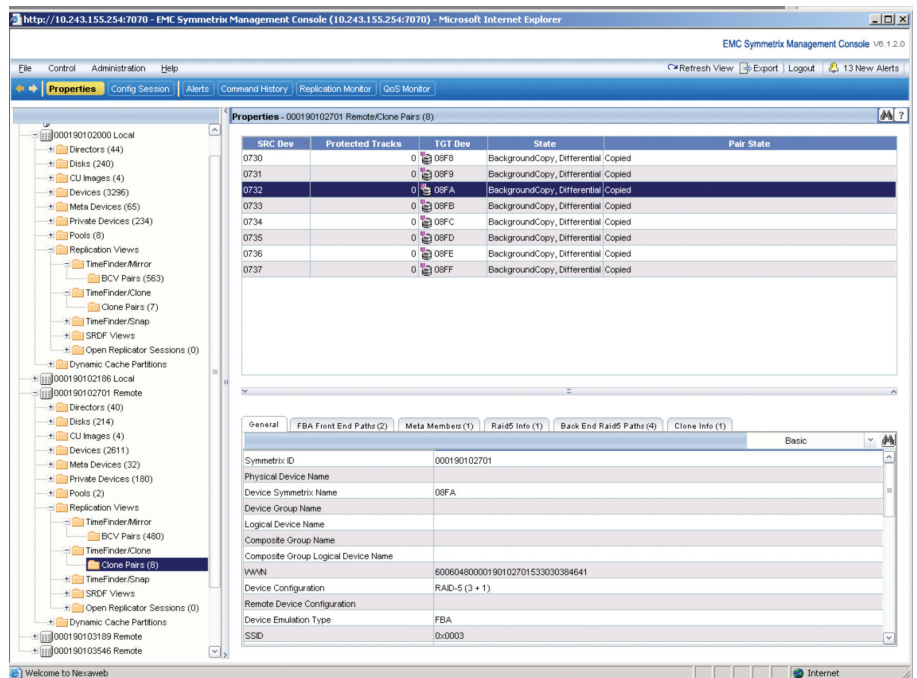
With either full-volume copies or snapshot images, having a recent local image available can greatly increase your options should you need to fall back to an older copy of your data. With snapshots, for example, you can create images at regular intervals throughout the day and have them available for an instant restore (without having to wait for the background copy processes to complete). This can be accomplished utilizing a fraction of the disk space required by full-volume copies, enabling significant economic savings for certain applications.

## Test applications faster, more reliably

The pressures of today’s business environment—reduced budgets, reduced staffing, tighter schedules—demand uptime, rapid application development, agility, and speed. And with TimeFinder/Snap, these demands can be met with a cost-effective solution requiring fewer dedicated resources (both capital and human). TimeFinder/Snap allows you to make consistent space-saving snapshot copies of your application volume sets with a minimal amount of planning and resources.



The TimeFinder family contains several optional components to help you meet specific service-level commitments by enabling increased application availability, automation, and application consistency requirements.



The Symmetrix Management Console is a simple, intuitive, browser-based user interface for the configuration and management of Symmetrix systems and is used to manage and monitor TimeFinder operations.

## Maximize TimeFinder family benefits with EMC services

The EMC Global Services organization delivers expert implementation of TimeFinder family products; leveraging EMC's extensive storage deployment best practices and proven methodology to accelerate business results without straining your resources. Our services professionals have the technical expertise and skills needed to help you quickly realize the value of TimeFinder family software in your Symmetrix environment without the risks of self-implementation. The EMC Global Delivery Model ensures rapid, flawless service delivery to every customer engagement, regardless of location.

Ask your EMC sales representative about the full spectrum of services from EMC that can benefit your organization.

**EMC<sup>2</sup>**  
where information lives<sup>®</sup>

EMC Corporation  
Hopkinton  
Massachusetts  
01748-9103  
1-508-435-1000  
In North America 1-866-464-7381  
www.EMC.com

### Take the next step

For more information on the EMC TimeFinder family of local replication products and how it can accelerate your IT operations and business processes, contact your local EMC sales representative or authorized value-added reseller, call us at 1-866-464-7381, or visit our website at [www.EMC.com](http://www.EMC.com).